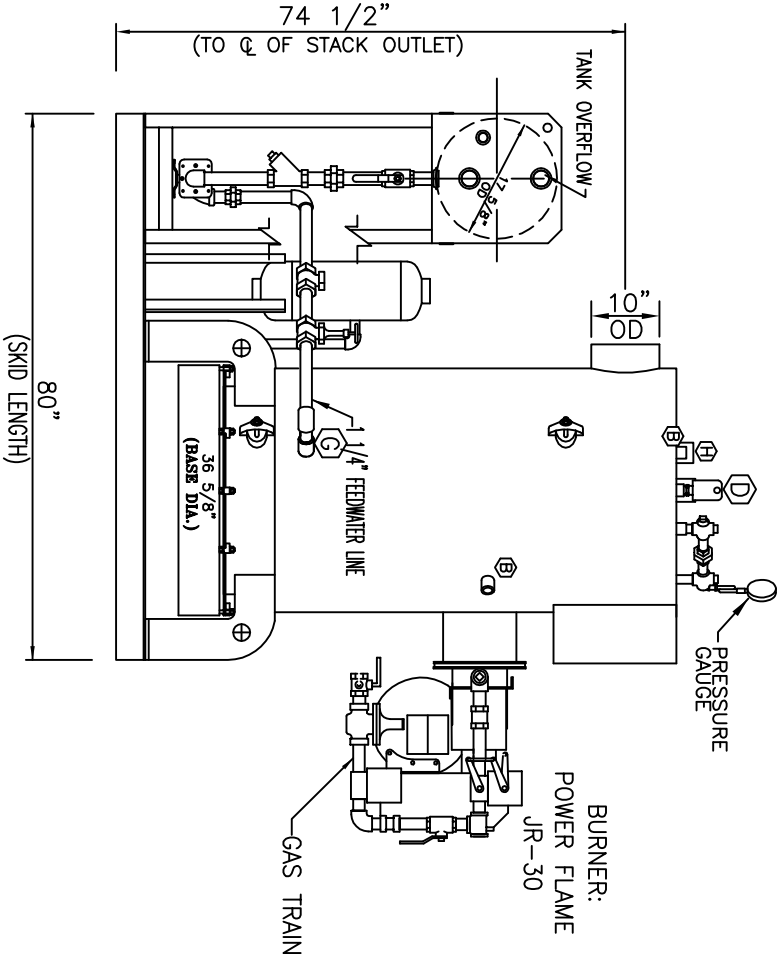
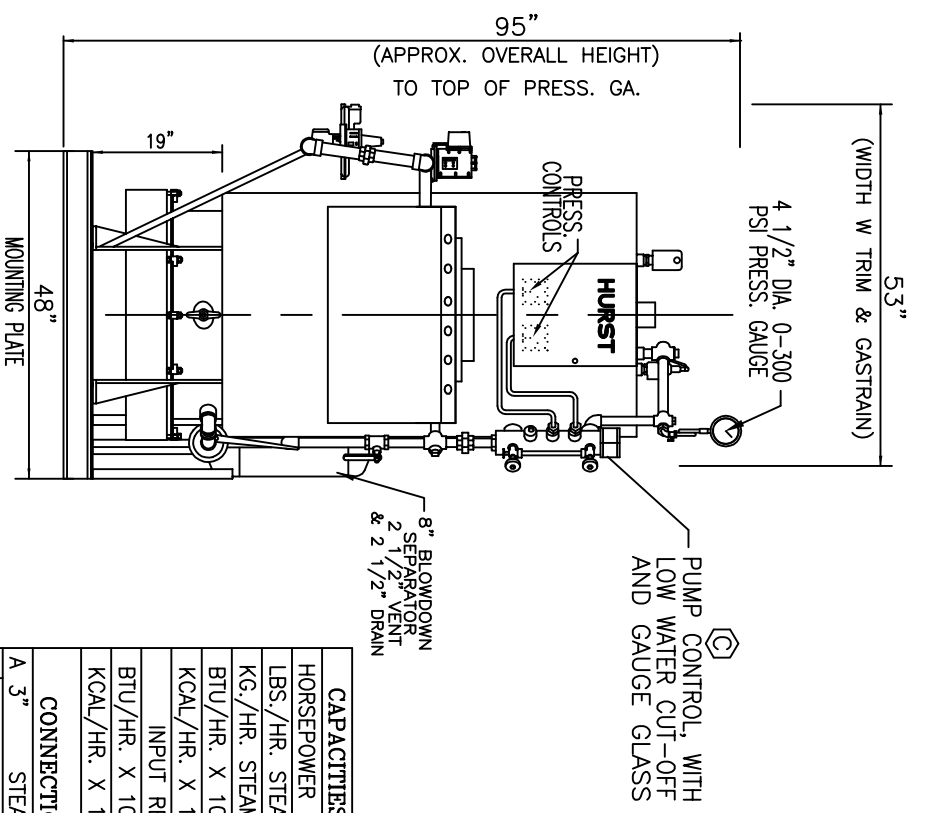


APPROX. OVERALL LGTH. W/PIPING
107"
TOP VIEW



80"
(SKID LENGTH)
LEFT SIDE VIEW



FRONT VIEW

CAPACITIES—OUTPUT	
HORSEPOWER	— 30
LBS./HR. STEAM	— 1035
KG./HR. STEAM	— 469
BTU/HR. X 1000	— 1004
KCAL/HR. X 1000	— 253
INPUT REQUIRED	
BTU/HR. X 1000	— 1255
KCAL/HR. X 1000	— 316
CONNECTION SIZES	
A 3"	STEAM OUTLET
B 1"	SPARE
C	PRIM. LOW WATER CUT-OFF
D 1"	FOR PROBE TYPE 2nd
	LOW WATER CUT-OFF
E	SAFETY VALVE, 1" OUTLET
F 1 1/4"	BOILER TAPPING
G 1 1/4"	BLOWDOWN VALVE
H 2"	SPARE
I 1 1/4"	SPARE
	WATER CAP. FLOODED — 86 GAL.
	SHIPPING WEIGHT 2700 LBS.

DIMENSIONS SUBJECT TO CHANGE WITHOUT NOTICE.
CONSULT FACTORY FOR CERTIFIED DRAWINGS.

R | BY: | DATE: | DML | REASON FOR CHANGE
 THIS DRAWING IS THE PROPERTY OF HURST BOILER AND WELDING CO., INC. AND
 SHALL REMAIN THE PROPERTY OF HURST BOILER AND WELDING CO., INC. AND MUST BE RETURNED UPON REQUEST

HURST BOILER & WELDING CO., INC.
 30 HP VIX VERTICLE IMMERSERD TUBES
 WITH 30 GAL. BOILER FEEDWATER SYSTEM
 & 8" DIA. x 26" BLOWDOWN SEPARATOR
 150 PSI DESIGN PRESSURE

SCALE: | DML | BY: | DATE: | CHK'D. BY: | DRAWING NO.: | R
 NTS 24 | JGF | 8/5/09 | TB | VIX-30-150RB