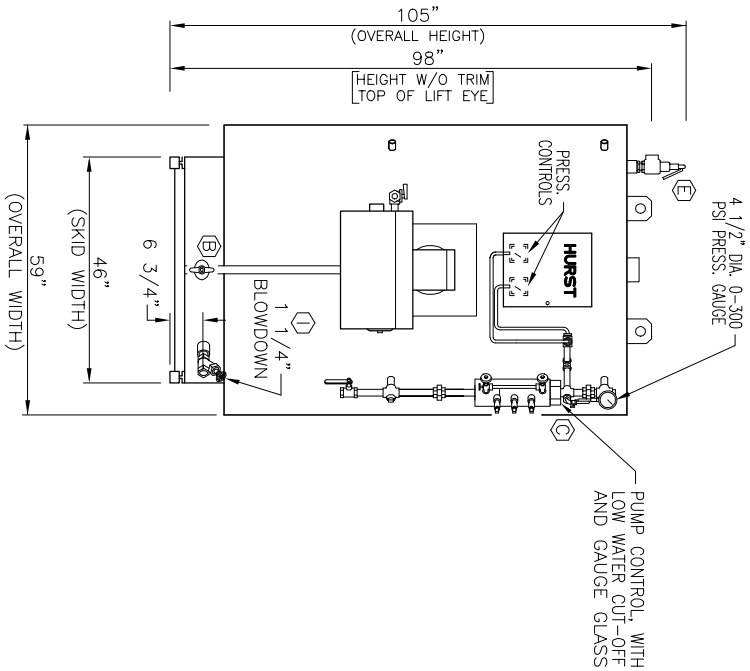
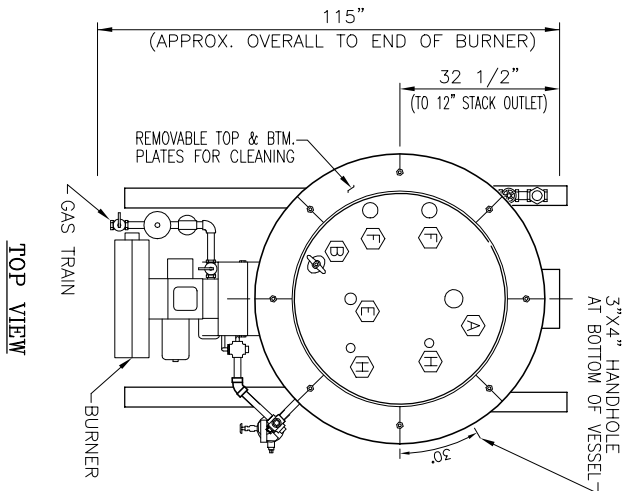


**LEFT SIDE VIEW**



**FRONT VIEW**



**TOP VIEW**

CAPACITIES - OUTPUT		CONNECTION SIZES	
HORSEPOWER	— 50	A 1 1/2"	STEAM OUTLET
LBS./HR. STEAM	— 1725	B 3" X 4"	HANDHOLE
KG./HR. STEAM	— 782	C	LOW WATER CUT-OFF & PUMP CONTROL
BTU/HR. X 1000	— 1674	D	SECOND LOW WATER CUT-OFF PROBE
KCAL/HR. X 1000	— 422	E	SAFETY VALVE, 1 1/4" OUTLET
INPUT REQUIRED		F	2" SPARE
BTU/HR. X 1000	— 2092	G	1" FEEDWATER LINE
KCAL/HR. X 1000	— 527	H	1" SPARE
		I	1-1/4" BLOWDOWN

WATER CAP. AT NWL	— 149.3 GAL.
WATER CAP. FLOODED	— 309.6 GAL.
SHIPPING WEIGHT	5500 LBS.

DIMENSIONS SUBJECT TO CHANGE WITHOUT NOTICE.  
CONSULT FACTORY FOR CERTIFIED DRAWINGS.

R	BY:	DATE:	CHK'D.	REASON FOR CHANGE

THIS DRAWING IS THE PROPERTY OF HURST BOILER AND WELDING CO., INC. AND MAY NOT BE COPIED OR REPRODUCED IN ANY WAY UNLESS AUTHORIZED IN WRITING BY HURST BOILER AND WELDING CO., INC. AND MUST BE RETURNED UPON REQUEST

<b>HURST BOILER &amp; WELDING CO., INC.</b>			
<b>50 HP -4 PASS VERTICAL TUBELESS BOILER</b>			
150 PSI DESIGN PRESSURE			
SCALE:	DWN. BY:	DATE:	CHK'D. BY:
32	JGF	11-25-01	JHO
			DRAWING NO.:
			4VT-50-150