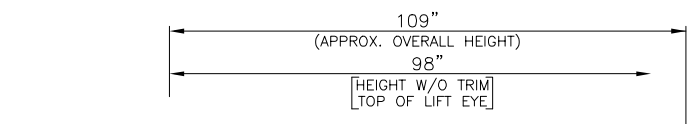
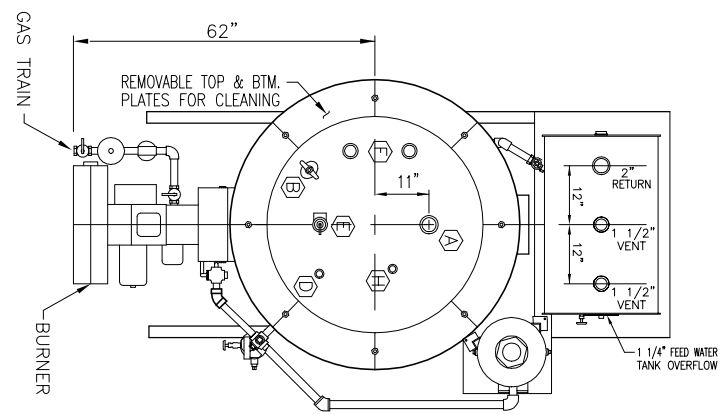
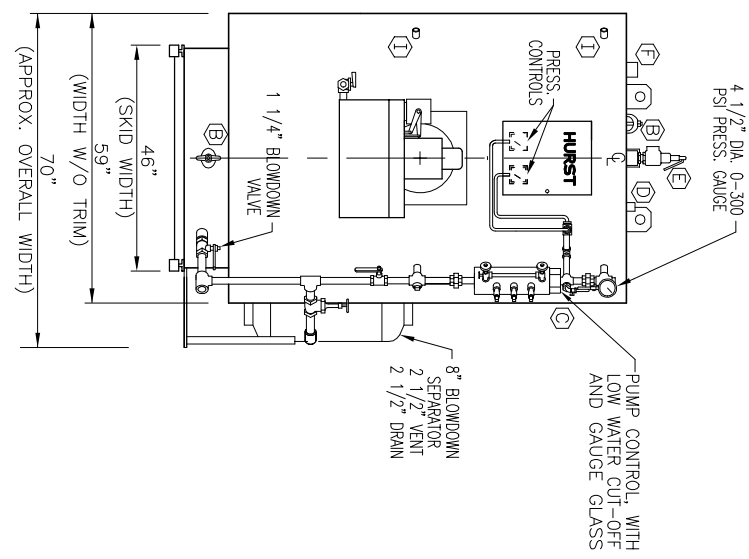


LEFT SIDE VIEW



FRONT VIEW



TOP VIEW

CAPACITIES-OUTPUT		CONNECTION SIZES	
HORSEPOWER	50	A	2 1/2" STEAM OUTLET
LBS./HR. STEAM	1725	B	3" X 4" HANDHOLE
KG./HR. STEAM	782	C	LOW WATER CUT-OFF & PUMP CONTROL
BTU/HR. X 1000	1674	D	SECOND LOW WATER CUT-OFF PROBE
KCAL/HR. X 1000	422	E	SAFETY VALVE, 1 1/4" OUTLET
INPUT REQUIRED		F	2" SPARE
BTU/HR. X 1000	2092	G	1" FEEDWATER LINE
KCAL/HR. X 1000	527	H	1" SPARE
		I	1" SPARES FOR (OPTIONAL)
			2nd LWCO (FLOAT TYPE)
			WATER CAP. AT WWL - 158 GAL.
			WATER CAP. FLOODED - 313 GAL.
			SHIPPING WEIGHT - 6400 LBS.

R	BY:	DATE:	CHK'D.	REASON FOR CHANGE

HURST BOILER & WELDING CO., INC.
50 HP - 4 PASS VERTICAL TUBELESS BOILER
 w/60 GAL. FEEDWATER SYSTEM
 & 8" DIA. X 26" BLOWDOWN SEPARATOR
 150 PSI DESIGN PRESSURE

SCALE: DMN. BY: DATE: CHK'D. BY: DRAWING NO.:
 32 JGF 11/25/01 JHO 4VT-50-150RB R

THIS DRAWING IS THE PROPERTY OF HURST BOILER AND WELDING CO., INC. AND MAY NOT BE COPIED OR REPRODUCED IN ANY WAY UNLESS AUTHORIZED IN WRITING BY HURST BOILER AND WELDING CO., INC. AND MUST BE RETURNED UPON REQUEST